

### About PowerLinc Controller's Certification

PowerLinc Controller has been thoroughly tested by ITS ETL SEMKO, a nationally recognized independent third-party testing laboratory. Products bearing North American ETL Listed mark signifies that the product has been tested to and has met the requirements of a widely recognized consensus of U.S. and Canadian product safety standards, that the manufacturing site has been audited, and that the manufacturer has agreed to a program of quarterly factory follow-up inspections to verify continued conformance.



### Smarthome Limited Warranty

Smarthome warrants to the original consumer purchaser of this product that, for a period of two years from the date of purchase, this product will be free from defects in material and workmanship and will perform in substantial conformity to the description of the product in this Owner's Manual. This warranty shall not apply to defects or errors caused by misuse or neglect.

If the product is found to be defective in material or workmanship or if the product does not perform as warranted above during the warranty period, Smarthome will either repair it, replace it or refund the purchase price, at its option, upon receipt of the product at the address below, postage prepaid, with proof of the date of purchase and an explanation of the defect or error. The repair, replacement, or refund that is provided for above shall be the full extent of Smarthome's liability with respect to this product.

For repair or replacement during the warranty period, call Smarthome customer service to receive an RA# (return authorization number), properly package the product (with the RA# clearly printed on the outside of the package) and send the product, along with all other required materials to:

**Smarthome**  
ATTN: Receiving Dept.  
16542 Millikan Ave  
Irvine, CA 92606-5027

**SMARTHOME™**  
MAKING LIFE MORE CONVENIENT, SAFE AND FUN

### Limitations:

THE ABOVE WARRANTY IS IN LIEU OF AND SMARTHOME DISCLAIMS ALL OTHER WARRANTIES, WHETHER ORAL OR WRITTEN, EXPRESS OR IMPLIED, INCLUDING ANY WARRANTY OF MERCHANTABILITY OR FITNESS FOR A PARTICULAR PURPOSE. ANY IMPLIED WARRANTY, INCLUDING ANY WARRANTY OF MERCHANTABILITY OR FITNESS FOR A PARTICULAR PURPOSE, WHICH MAY NOT BE DISCLAIMED OR SUPPLANTED AS PROVIDED ABOVE SHALL BE LIMITED TO THE ONE YEAR PERIOD OF THE EXPRESS WARRANTY ABOVE. NO OTHER REPRESENTATION OR CLAIM OF ANY NATURE BY ANY PERSON SHALL BE BINDING UPON SMARTHOME OR MODIFY THE TERMS OF THE ABOVE WARRANTY AND DISCLAIMER.

IN NO EVENT SHALL SMARTHOME BE LIABLE FOR SPECIAL, INCIDENTAL, CONSEQUENTIAL OR OTHER DAMAGES RESULTING FROM THE POSSESSION OR USE OF THIS PRODUCT, INCLUDING WITHOUT LIMITATION DAMAGE TO PROPERTY AND, TO THE EXTENT PERMITTED BY LAW, PERSONAL INJURY, EVEN IF SMARTHOME KNEW OR SHOULD HAVE KNOWN OF THE POSSIBILITY OF SUCH DAMAGES.

Some states do not allow limitations on how long an implied warranty lasts and/or the exclusion or limitation of damages, in which case the above limitations and/or exclusions may not apply to you. You may also have other legal rights, which may vary from state to state.

SwitchLinc, KeypadLinc, Signalinc, LampLinc, PowerLinc, ToggleLinc, BoosterLinc, ApplianceLinc, Controlinc, TesterLinc, FilterLinc, Probelinc, TempLinc, TouchLinc, IR Linc & SmarthomeLive are trademarked by Smarthome, Inc.

© Copyright 2004 Smarthome, 16542 Millikan Ave., Irvine, CA 92606-5027  
800.SMART.HOME - 949.221.9200- www.smarthome.com

rev 052004



## PowerLinc™ Controller

### Quick Start Guide

#1132CU

PowerLinc Controller

Patent Pending

**SMARTHOME™**  
MAKING LIFE MORE CONVENIENT, SAFE AND FUN

## Congratulations and Introduction

PowerLinc™ Controller USB is the world's first downloadable home automation interface for X10/PLC (Powerline Carrier) control that connects to a computer's Universal Serial Bus (USB). It is a stand-alone home automation interface for controlling lights, appliances, heating/air conditioning systems and alarm systems. This totally new module is just like our original PowerLinc USB Interface (1132U), but now includes on board processing so timers and macros can be downloaded without the need to leave the host computer up and running.

Unlike previous solutions that used the slower-speed RS-232 Com Port and required the use of a dedicated interrupt control line (IRQ), PowerLinc Controller USB uses the newer and more flexible USB channel found on nearly all computers. USB ports support higher speeds and multiple USB devices can be attached to the computer at the same time.

PowerLinc Controller USB works with all USB-aware versions of Microsoft® Windows® starting with Microsoft Windows 98se and above with exception of Windows 2000/2003 Server. PowerLinc Controller USB uses the Microsoft Windows Human Interface Drivers that are already in use and installed on all versions of Microsoft Windows 98se and later. This means there are no hardware drivers to install or conflict with other hardware or software.

## Key Features

- Includes internal memory and clock for PC-free operation
- Easy and trouble-free USB connection
- Stores over 1,000 commands in 32KB of memory
- Includes Smarthome Manager Essential automation software
- Feed-through outlet won't block you from plugging in other devices
- Compatible with third party programs
- Uses the HID (human interface device) drivers already installed with Windows™

## Install the software before plugging in the Interface!

The PowerLinc Controller USB includes Windows-based programming on a CD ROM. The Smarthome Manager program will allow you to set up timers, macros and other home automation events for the PowerLinc Controller USB. Once the events are added, they are downloaded into the Controller's on board memory and will execute independently of the computer. An internal battery will keep the time and preserve the programming if the interface is disconnected from electricity. The software will need approximately 40MB of hard drive space.

Follow these steps to start automating your home:

1. Place the CD ROM into the computer's CD drive.
2. A selection screen will be displayed.
3. Choose **Install Smarthome Manager (Essential or Plus) for PowerLinc Controller** to begin the installation.
4. Follow the on-screen instructions.

2

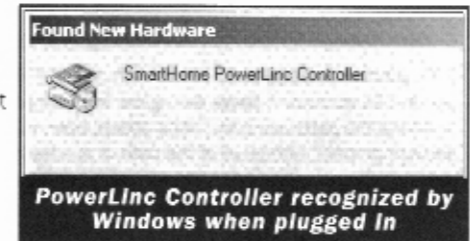


After the installation, an icon will appear on your desktop.

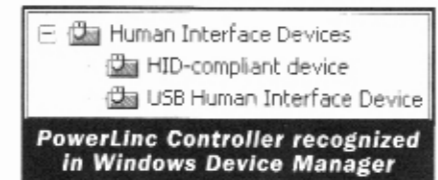


## Connecting PowerLinc Controller Interface to the Computer

1. Turn on and boot up your computer (if already on, turn off all running programs).
2. Plug in the PowerLinc Controller into an AC outlet and connect the USB cable into the USB outlet on the bottom of the controller.
3. Once the computer is fully booted up, plug in the USB cable into a USB port on the computer.
4. In a few seconds, the computer displays this message:
5. Moments later, the computer will display a message indicating that it is using drivers already built into Windows. In some cases, you may need your original Windows Installation CD to load the HID drivers.



The computer is now ready to use the PowerLinc Controller. You can confirm that Windows has recognized the PowerLinc Controller by looking it up in Windows' Device Manager.



## Tips for Using PowerLinc Controller USB

- The cable cannot be any longer than 10' (6' or less is recommended).
- Do not plug PowerLinc Controller USB into a power strip or AC line filter.
- Use only one PowerLinc Controller USB per computer.
- Some computers and their accessories can absorb Power Line Carrier (PLC) signals off the power lines. Since PowerLinc Controller will be so close to the computer, **the power strip for the computer should be filtered.** Use Smarthome's FilterLinc #1626 on the computer's power strip to keep the PowerLinc Controller's signals from getting absorbed by the computer equipment.
- Don't plug other PLC transmitters into the same outlet as PowerLinc Controller USB. Every PLC transmitter will absorb the other transmitter's PLC signals when they are not transmitting. In some cases, up to half the signal can be lost nearby transmitters.



3